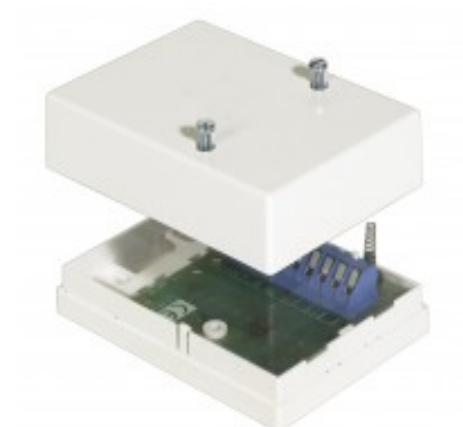


# RB 010

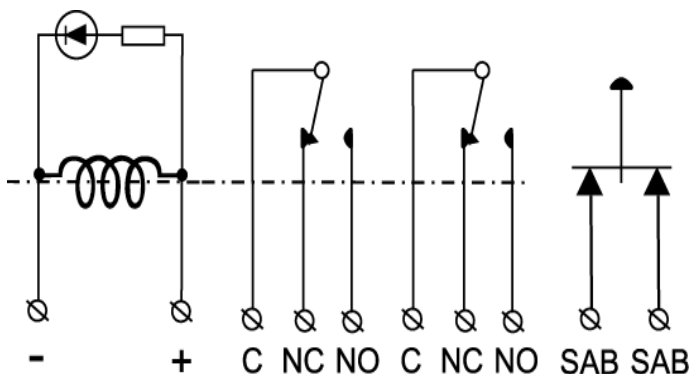
## Relay box

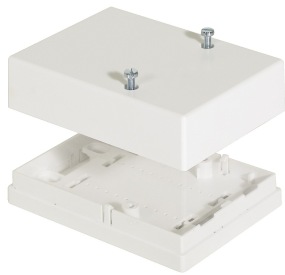
### Technical data

Relay output	2 x NC/NO
Supply voltage	9-30 VDC
Current consumption	16 mA at 12 VDC / 38 mA at 28 VDC
Contact rating	48 VDC / 1 A / 48 VA
Tamper protection / Rating	Yes, 48 VDC / 50mA
Connection	Screw terminals
Housing material	ABS Plastic
Colour	White
Operating temperature range	-40 to +70°C
Dimensions (L x W x H) mm	90 x 66 x 35



The RC 010 is a relay card with a dual (2x) alternating (NC / NO) function. Connection is provided via screw terminal with wire protection. Active relay is indicated by LED. The card also has an anti-tamper switch to protect against unauthorised opening if the card is installed, for example, in a JB 200 box.



**Related products and accessories****JB 200**

Installation box